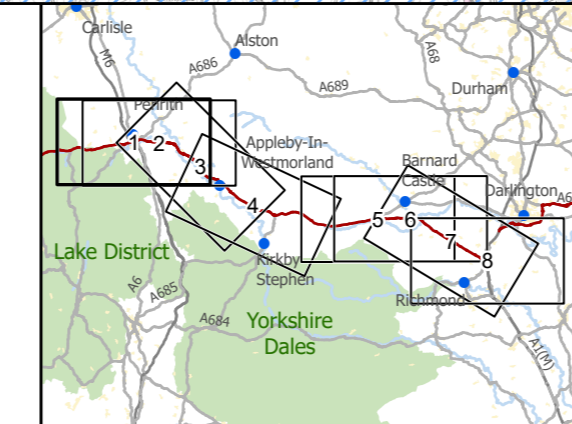


Existing A66
 Order Limits
 Study Area 7km
 Areas Theoretically Visible from Scheme at Road Level (0m) (5m DTM)
 Additional Areas Theoretically Visible from Scheme at HGV Level (4.7m) (5m DTM)
 National Park
 North Pennines Area of Outstanding Natural Beauty



3 Piccadilly Place
Manchester
M1 3BN

P02	First Issue				
	PKELL	CESL	JSIM	AMIT	KWHA
	17/03/22	17/03/22	17/03/22	20/04/22	20/04/22
Revision	Created	Checked	Reviewed	Approved	Authorised

Kilometres

Scale @ A3: 1:75,000 | Project Ref No HE565627 | Stage: Stage 3
© Crown copyright and database rights (2022). All rights reserved. OS 100030649. Contains public sector information licensed under the Open Government Licence v3.0. Digital Surface Model - ©Astrium Ltd and Bluesky International Ltd

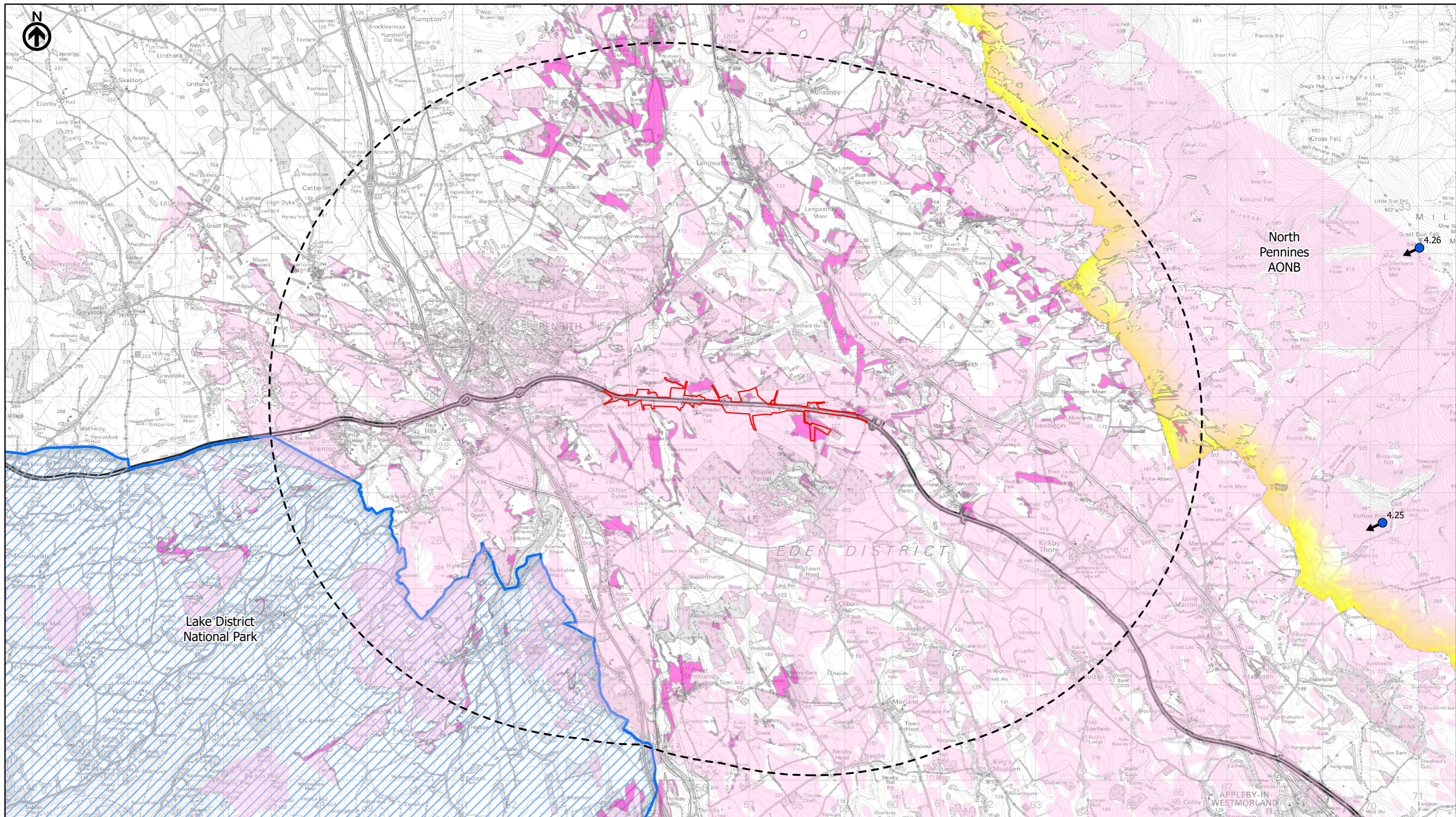
Project Name
A66 Northern Trans-Pennine Project

Map Title
Figure 10.3

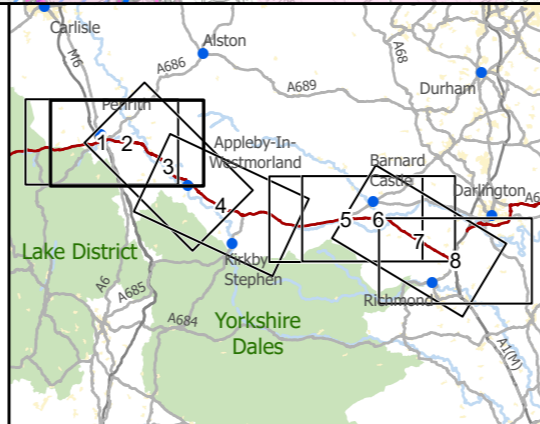
Zone of Theoretical Visibility (ZTV 7km)
 Scheme: 0102, M6 Junction 40 to Kemplay Bank
 Sheet 1 of 8

Map Number	Project	Originator	Volume
HE565627	-	AMY	ELS
S00		-	MP - LL - 006070
Location		Type	Role Number

Suitability	Suitability Description	Revision
S4	FIT FOR STAGE APPROVAL	P02



— Existing A66
 — Order Limits
 - - - Study Area 7km
 ↑ Remote Viewpoint
 Areas Theoretically Visible from Scheme at Road Level (0m) (5m DTM)
 Additional Areas Theoretically Visible from Scheme at HGV Level (4.7m) (5m DTM)
 National Park
 North Pennines Area of Outstanding Natural Beauty



national highways
 3 Piccadilly Place
 Manchester
 M1 3BN

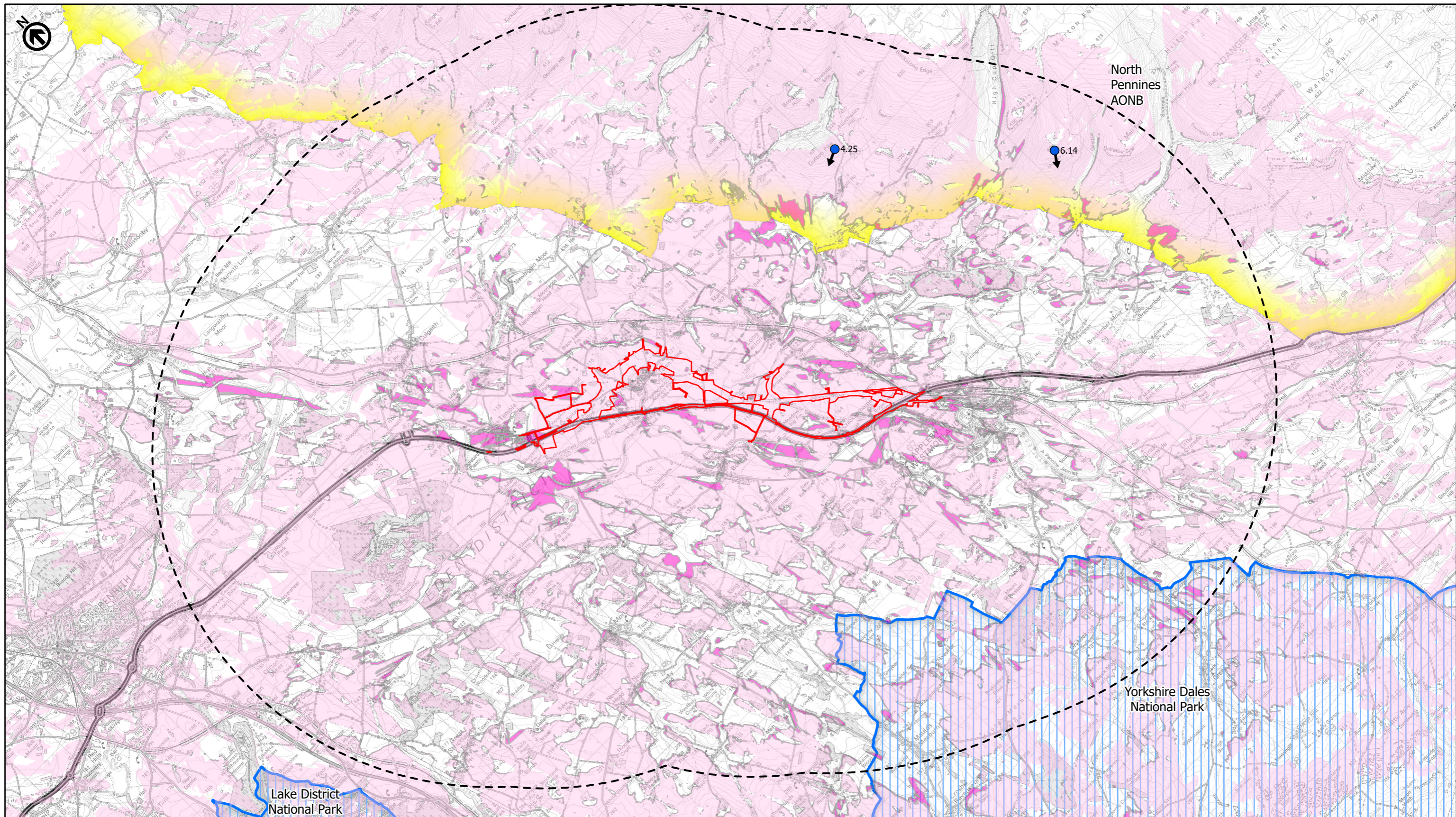
P02	First Issue	PKELL	CESL	JSIM	AMIT	KWHA
		17/03/22	17/03/22	17/03/22	20/04/22	20/04/22
Revision	Created	Checked	Reviewed	Approved	Authorised	

Scale @ A3: 1:75,000 | Project Ref No HE565627 | Stage: Stage 3
 © Crown copyright and database rights (2022). All rights reserved. OS 100030649.
 Contains public sector information licensed under the Open Government Licence v3.0.
 Digital Surface Model - ©Astrium Ltd and Bluesky International Ltd

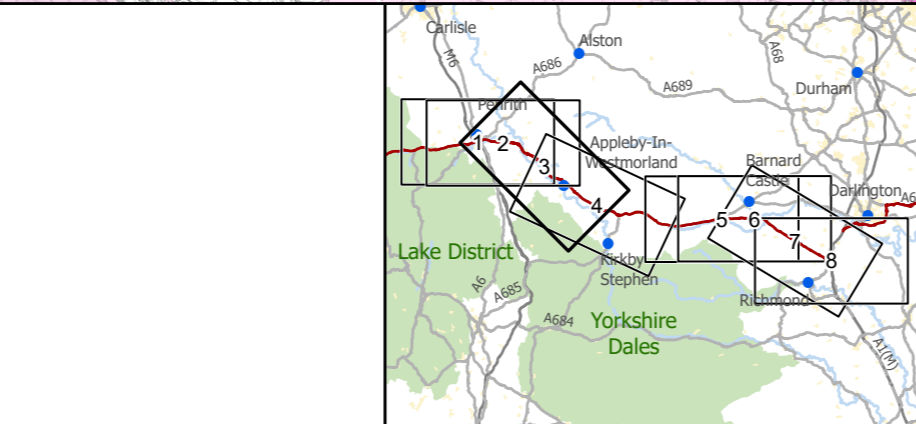
Project Name
A66 Northern Trans-Pennine Project
 Map Title
Figure 10.3
 Zone of Theoretical Visibility (ZTV 7km)
 Scheme: 03, Penrith to Temple Sowerby
 Sheet 2 of 8

Map Number	Project	Originator	Volume
HE565627	-	AMY	- ELS
Location		Type	Role
S00		MP	LL
			006071

Suitability	Suitability Description	Revision
S4	FIT FOR STAGE APPROVAL	P02



— Existing A66
 — Order Limits
 - - - Study Area 7km
 ↑ Remote Viewpoint
 Areas Theoretically Visible from Scheme at Road Level (0m) (5m DTM)
 Additional Areas Theoretically Visible from Scheme at HGV Level (4.7m) (5m DTM)
 National Park
 North Pennines Area of Outstanding Natural Beauty



national highways
 3 Piccadilly Place
 Manchester
 M1 3BN

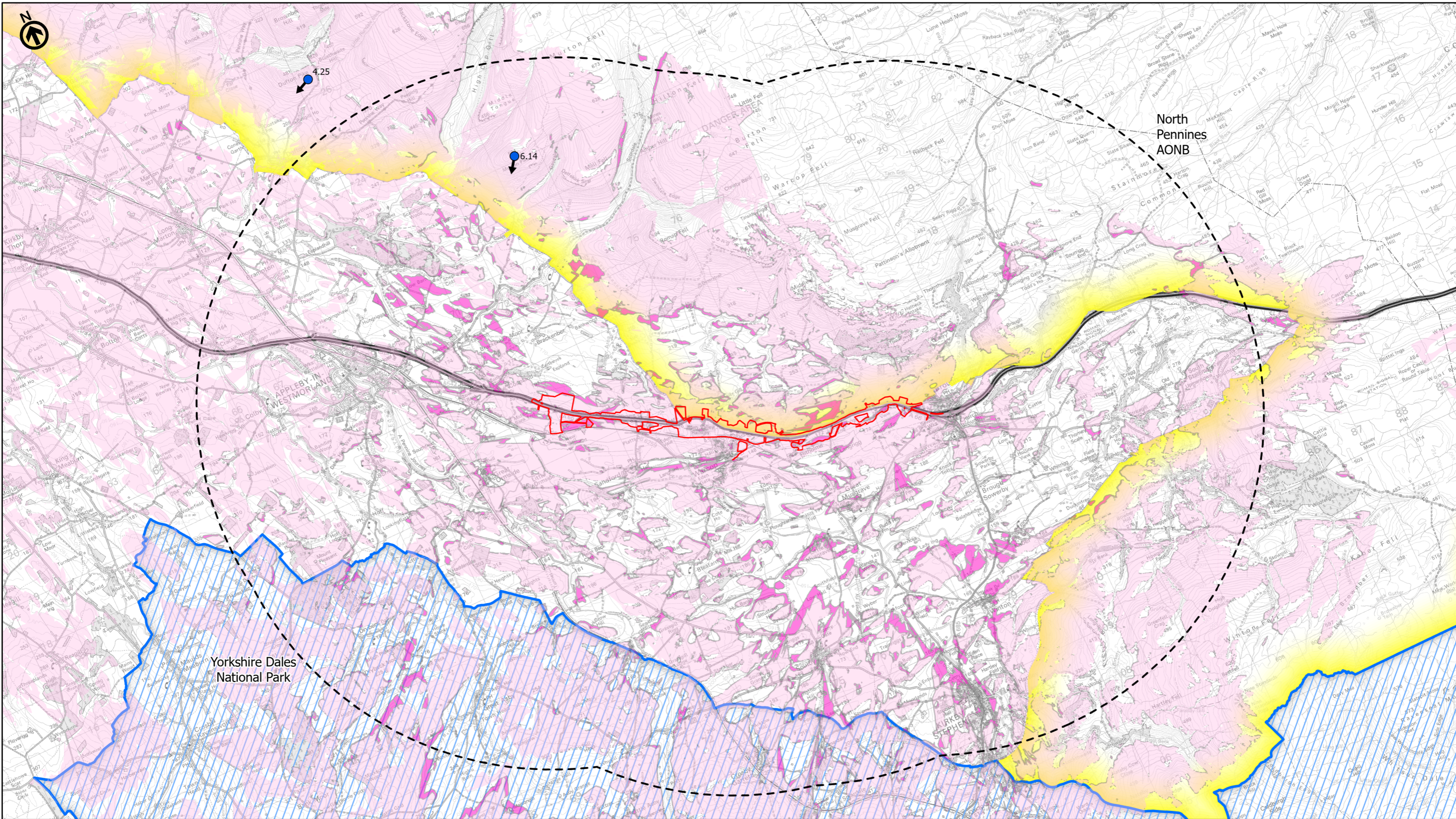
P02	First Issue				
	PKELL	CESL	JSIM	AMIT	KWHA
	17/03/22	17/03/22	17/03/22	20/04/22	20/04/22
Revision	Created	Checked	Reviewed	Approved	Authorised

Scale @ A3: 1:75,000 | Project Ref No HE565627 | Stage: Stage 3
 © Crown copyright and database rights (2022). All rights reserved. OS 100030649.
 Contains public sector information licensed under the Open Government Licence v3.0.
 Digital Surface Model - ©Astrium Ltd and Bluesky International Ltd

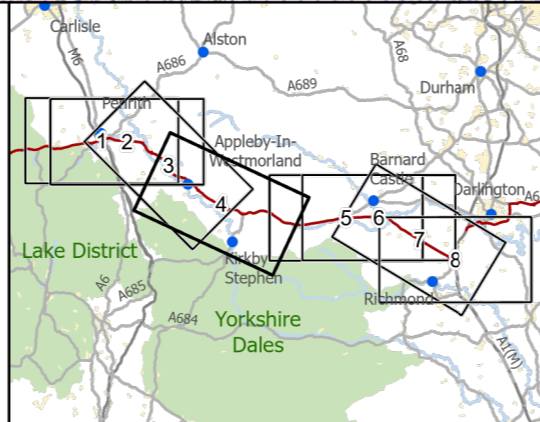
Project Name
A66 Northern Trans-Pennine Project
 Map Title
Figure 10.3
 Zone of Theoretical Visibility (ZTV 7km)
 Scheme: 0405, Temple Sowerby to Appleby
 Sheet 3 of 8

Map Number	Project	Originator	Volume
HE565627	-	AMY	ELS
S00	-	MP - LL	006092
	Location	Type	Role

Suitability	Suitability Description	Revision
S4	FIT FOR STAGE APPROVAL	P02



— Existing A66
 — Order Limits
 - - - Study Area 7km
 ↑ Remote Viewpoint
 Areas Theoretically Visible from Scheme at Road Level (0m) (5m DTM)
 Additional Areas Theoretically Visible from Scheme at HGV Level (4.7m) (5m DTM)
 National Park
 North Pennines Area of Outstanding Natural Beauty



national highways
 3 Piccadilly Place
 Manchester
 M1 3BN

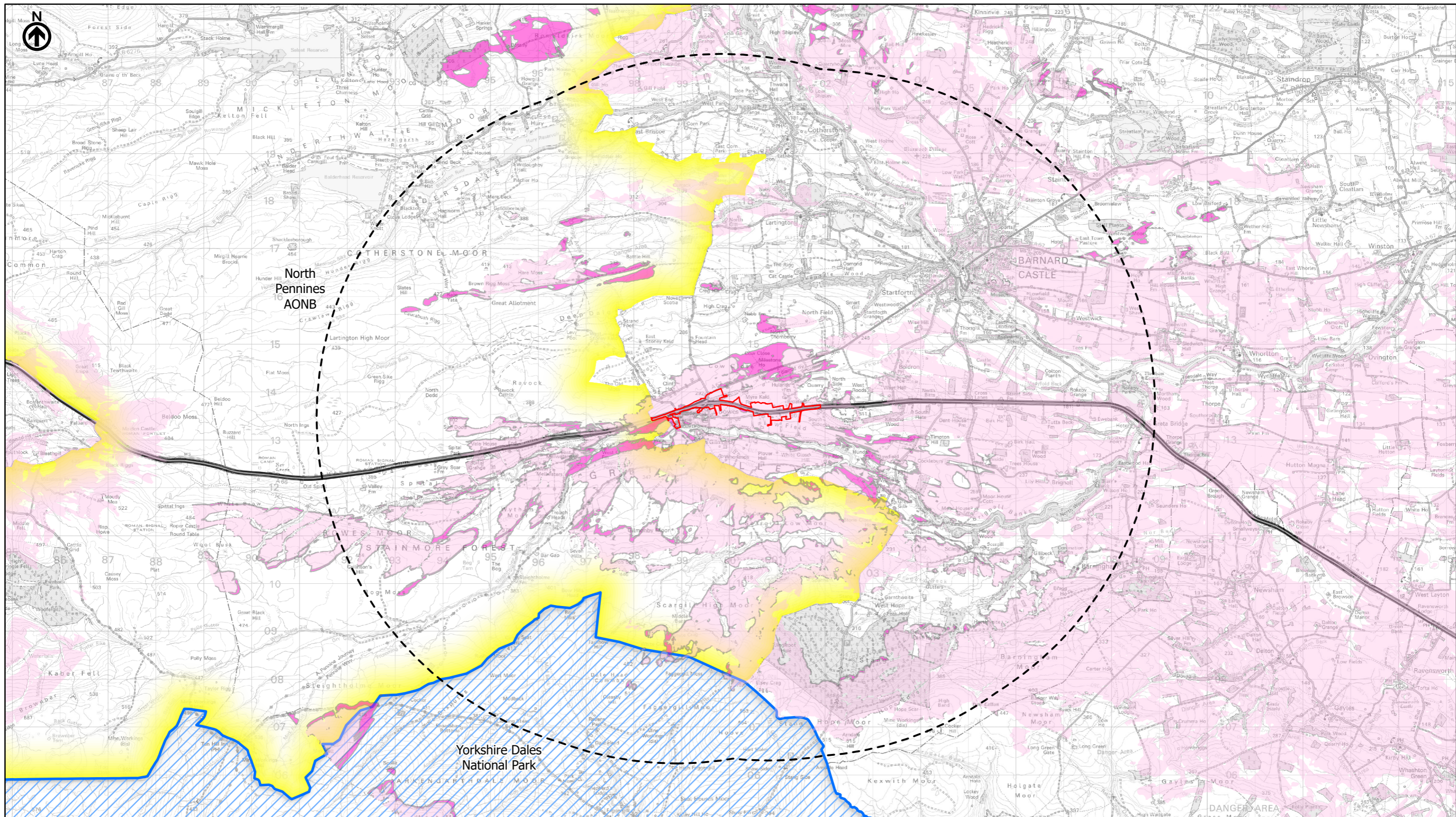
P03	Second Issue: Revised Order Limits				
	PKELL	CESL	JSIM	AWAR	KWHA
	19/04/23	19/04/23	19/04/23	16/05/23	16/05/23
Revision	Created	Checked	Reviewed	Approved	Authorised

Scale @ A3: 1:75,000 | Project Ref No HE565627 | Stage: Stage 3
 © Crown copyright and database rights (2023). All rights reserved. OS 100030649.
 Contains public sector information licensed under the Open Government Licence v3.0.
 Digital Surface Model - ©Astrium Ltd and Bluesky International Ltd

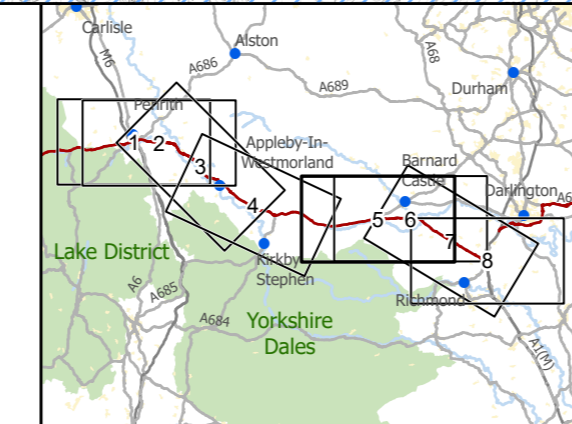
Project Name
A66 Northern Trans-Pennine Project
 Map Title
Figure 10.3
 Zone of Theoretical Visibility (ZTV 7km)
 Scheme: 06, Appleby to Brough
 Sheet 4 of 8

Map Number	Project	Originator	Volume
HE565627	-	AMY	-
S00	-	MP	LL
Location		Type	Role
S4			

Suitability	Suitability Description	Revision
S4	FIT FOR STAGE APPROVAL	P03



— Existing A66
 — Order Limits
 - - - Study Area 7km
 Areas Theoretically Visible from Scheme at Road Level (0m) (5m DTM)
 Additional Areas Theoretically Visible from Scheme at HGV Level (4.7m) (5m DTM)
 National Park
 North Pennines Area of Outstanding Natural Beauty



national highways
 3 Piccadilly Place
 Manchester
 M1 3BN

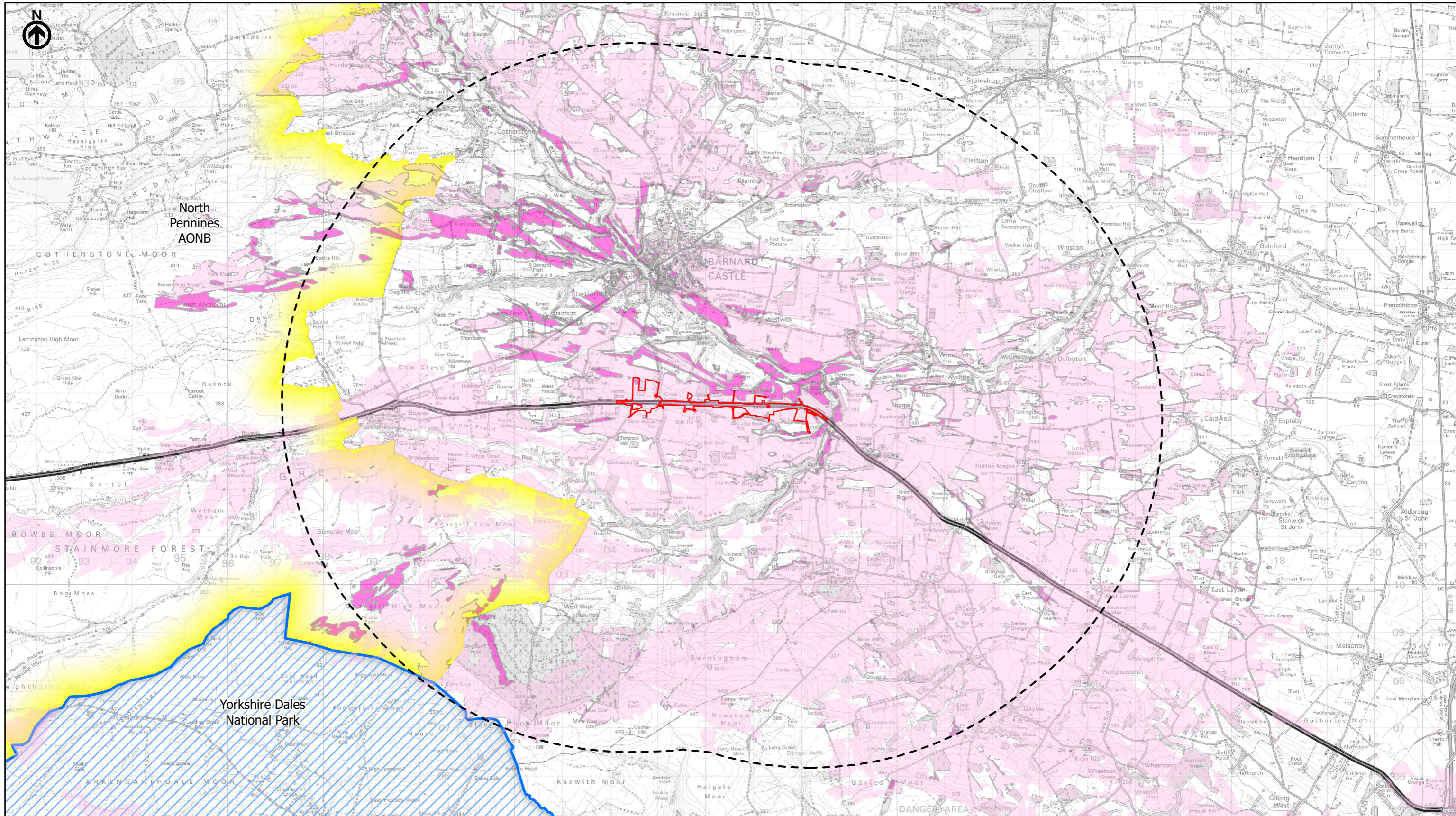
P02	First Issue	PKELL	CESL	JSIM	AMIT	KWHA
		17/03/22	17/03/22	17/03/22	20/04/22	20/04/22
Revision	Created	Checked	Reviewed	Approved	Authorised	

Scale @ A3: 1:75,000 | Project Ref No HE565627 | Stage: Stage 3
 © Crown copyright and database rights (2022). All rights reserved. OS 100030649.
 Contains public sector information licensed under the Open Government Licence v3.0.
 Digital Surface Model - ©Astrium Ltd and Bluesky International Ltd

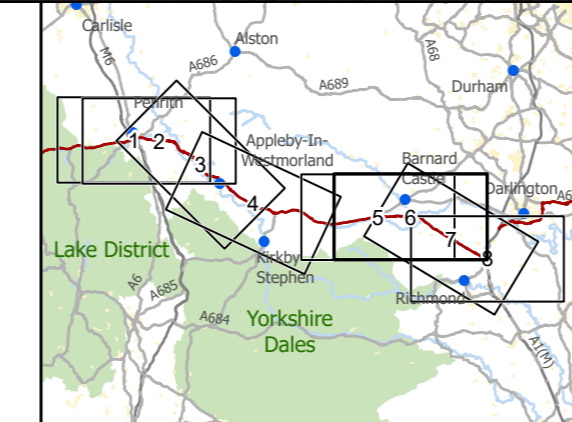
Project Name
A66 Northern Trans-Pennine Project
 Map Title
Figure 10.3
 Zone of Theoretical Visibility (ZTV 7km)
 Scheme: 07, Bowes Bypass
 Sheet 5 of 8

Map Number	Project	Originator	Volume
HE565627	-	AMY	ELS
Location		Type	Role
S00		MP	LL
			006094

Suitability	Suitability Description	Revision
S4	FIT FOR STAGE APPROVAL	P02



— Existing A66
 [Red Outline] Order Limits
 [Dashed Line] Study Area 7km
 [Pink Shaded Area] Areas Theoretically Visible from Scheme at Road Level (0m) (5m DTM)
 [Magenta Shaded Area] Additional Areas Theoretically Visible from Scheme at HGV Level (4.7m) (5m DTM)
 [Blue Hatched Area] National Park
 [Yellow Shaded Area] North Pennines Area of Outstanding Natural Beauty



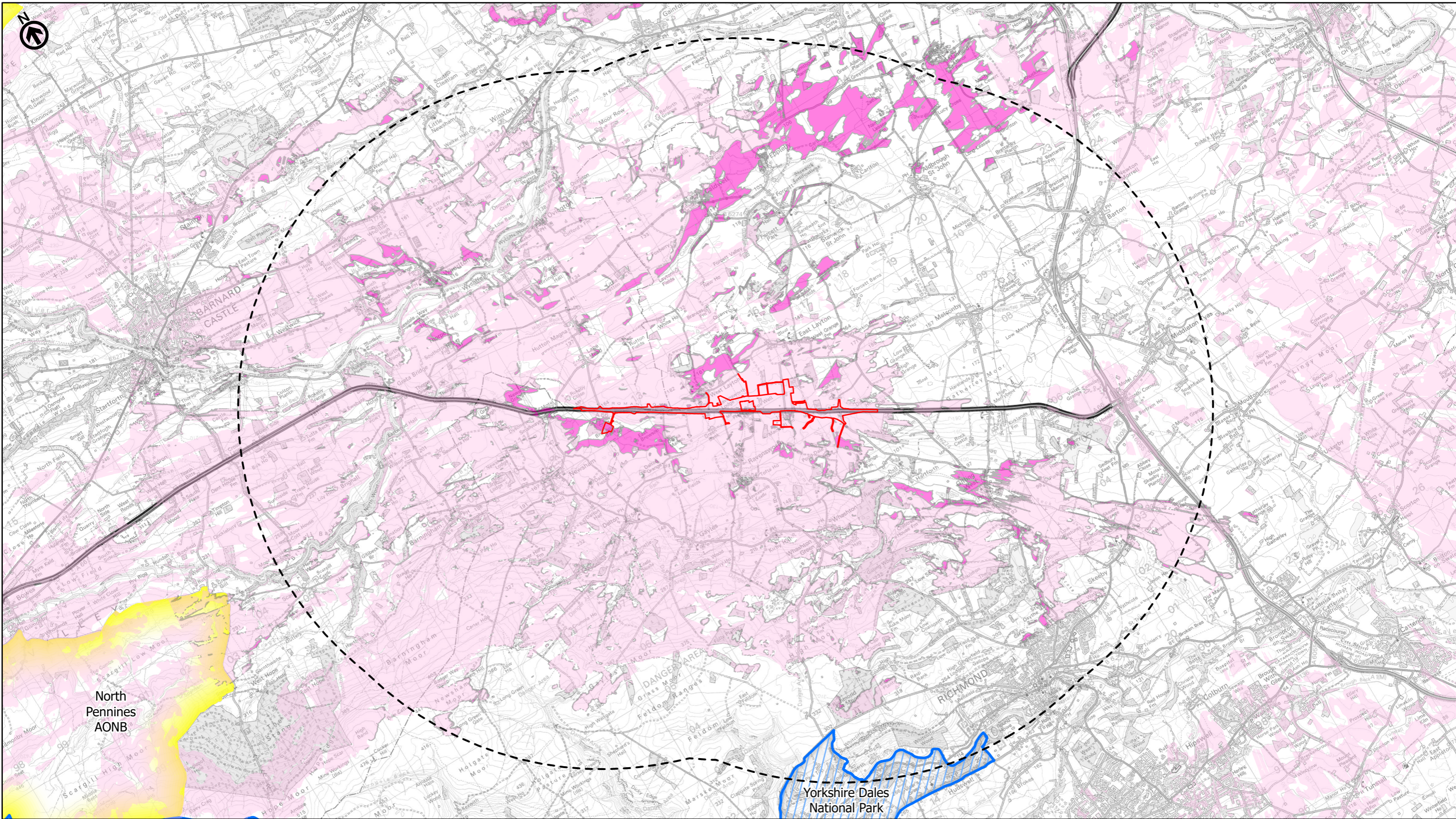
national highways
 3 Piccadilly Place
 Manchester
 M1 3BN

P02	First Issue	PKELL	CESL	JSIM	AMIT	KWHA
		17/03/22	17/03/22	17/03/22	20/04/22	20/04/22
Revision	Created	Checked	Reviewed	Approved	Authorised	

Scale @ A3: 1:75,000 | Project Ref No HE565627 | Stage: Stage 3
 © Crown copyright and database rights (2022). All rights reserved. OS 100030649.
 Contains public sector information licensed under the Open Government Licence v3.0.
 Digital Surface Model - ©Astrium Ltd and Bluesky International Ltd

Project Name
A66 Northern Trans-Pennine Project
 Map Title
Figure 10.3
 Zone of Theoretical Visibility (ZTV 7km)
 Scheme: 08, Cross Lanes to Rokeby
 Sheet 6 of 8

Map Number	Project	Originator	Volume
HE565627	-	AMY	ELS
S00	-	MP	LL
Location		Type	Role
S4	FIT FOR STAGE APPROVAL		Number
Suitability			Revision
			P02



- Existing A66
- Order Limits
- Study Area 7km
- Areas Theoretically Visible from Scheme at Road Level (0m) (5m DTM)
- Additional Areas Theoretically Visible from Scheme at HGV Level (4.7m) (5m DTM)
- National Park
- North Pennines Area of Outstanding Natural Beauty



national highways

3 Piccadilly Place
Manchester
M1 3BN

P02	First Issue	PKELL	CESL	JSIM	AMIT	KWHA
		17/03/22	17/03/22	17/03/22	20/04/22	20/04/22
Revision	Created	Checked	Reviewed	Approved	Authorised	

Kilometres

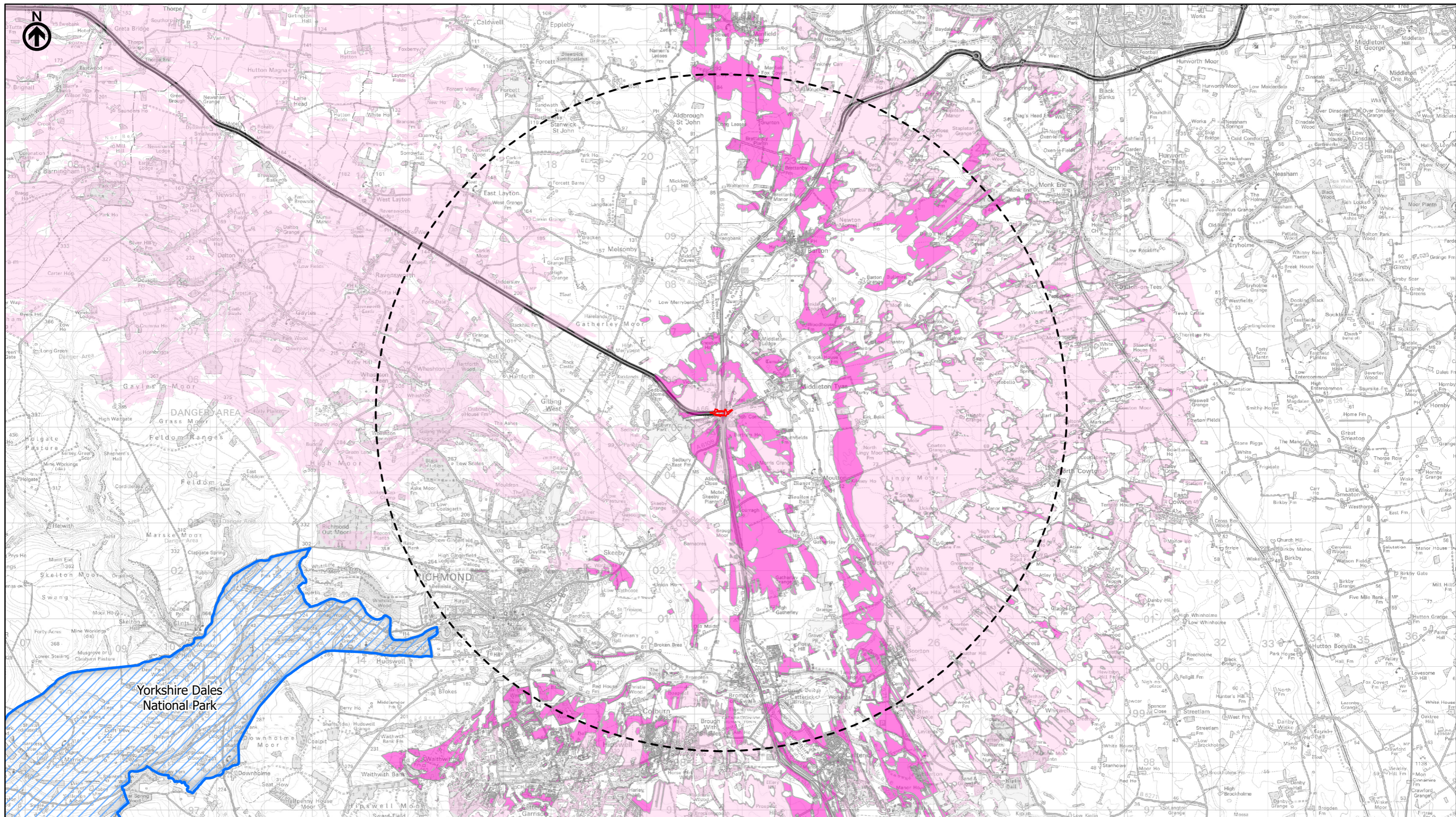
Scale @ A3: 1:75,000 | Project Ref No HE565627 | Stage: Stage 3
© Crown copyright and database rights (2022). All rights reserved. OS 100030649.
Contains public sector information licensed under the Open Government Licence v3.0.
Digital Surface Model - ©Astrium Ltd and Bluesky International Ltd

Map Number	Project	Originator	Volume
HE565627	-	AMY	-
S00	-	MP	-
Location	Type	Role	Number
S4	FIT FOR STAGE APPROVAL		P02

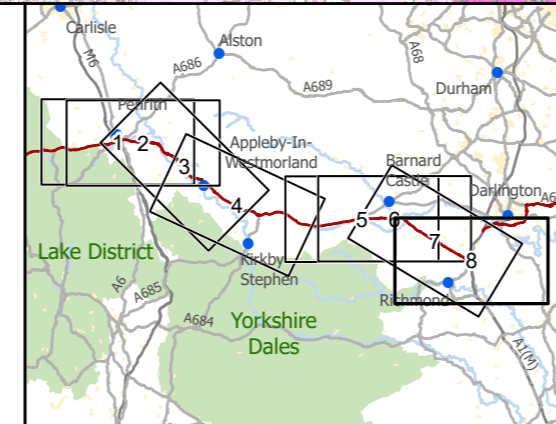
Project Name
A66 Northern Trans-Pennine Project

Map Title
Figure 10.3

Zone of Theoretical Visibility (ZTV 7km)
Scheme: 09, Stephen Bank to Carkin Moor
Sheet 7 of 8



- Existing A66
- Order Limits
- Study Area 7km
- Areas Theoretically Visible from Scheme at Road Level (0m) (5m DTM)
- Additional Areas Theoretically Visible from Scheme at HGV Level (4.7m) (5m DTM)
- National Park



national highways

3 Piccadilly Place
Manchester
M1 3BN

P02	First Issue				
	PKELL	CESL	JSIM	AMIT	KWHA
	17/03/22	17/03/22	17/03/22	20/04/22	20/04/22
Revision	Created	Checked	Reviewed	Approved	Authorised

0 2 4 6

Scale @ A3: 1:75,000 | Project Ref No HE565627 | Stage: Stage 3
 © Crown copyright and database rights (2022). All rights reserved. OS 100030649.
 Contains public sector information licensed under the Open Government Licence v3.0.
 Digital Surface Model - ©Astrium Ltd and Bluesky International Ltd

Project Name A66 Northern Trans-Pennine Project			
Map Title Figure 10.3			
Zone of Theoretical Visibility (ZTV 7km)			
Scheme: 11, A1(M) Junction 53 Scotch Corner			
Sheet 8 of 8			
Map Number Project	Originator	Volume	
HE565627	AMY	ELS	
S00	-	MP	LL - 006097
Location	Type	Role	Number
Suitability S4	Suitability Description FIT FOR STAGE APPROVAL		Revision P02